



Summer 2016

TUPELO LANE DESIGNS

A Modern Cabinetry and Furniture Refinishing Studio

Announcement

We are excited to announce moving forward we will be using a finish sprayer on all cabinet doors, drawers and furniture. Spraying finishes will cut down on production time and assist in getting you back into your kitchen faster.

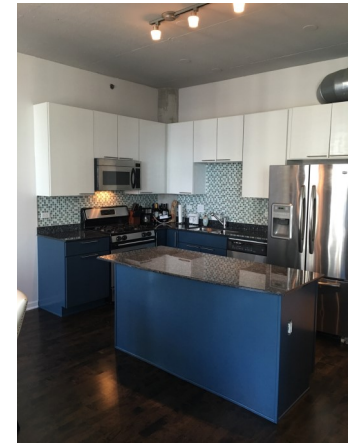
Frequently Asked Questions

Q: What is Glazing?

A: What is most commonly referred to as "cabinet glazing" is adding a second color to accentuate the architectural details of the cabinets. This can also be referred to as "pin-striping"

Q: What is all over Glazing?

A: The glaze is applied to the whole door and then wiped back to create the subtle shading. If you are looking for a more custom- One of a Kind finish, this would be a great look to make your cabinets uniquely yours.



"Michele was great to work with. She approached the project like a designer, providing advice and ideas. She completed the project within the estimated time frame and exactly on budget. I couldn't be happier with the results!"



Clean finish with Milkshake White

Entrée Kitchen Customers Only

- Special Pricing –10% off quotes.
- Priority appointments
- Referral bonus
- Priority project start dates
- First meal in new kitchen on us!

Please mention Entrée Kitchen during our first communication so I can ensure you get the full value .

www.TupeloLaneDesigns.com

630-200-3295

TupeloLaneDesigns@gmail.com